



Gateway of India - Established 1911



Rashtrapati Bhawan - Established 1912



India Gate - Established 1921



Sunworld Arista - The next landmark

SUNWORLD
ARISTA

3/4/5 BHK HIGH-END
AIR-CONDITIONED APARTMENTS

*THE FINEST BRITISH ARCHITECTURE
COMES ALIVE AGAIN*



*A CLASSICAL
RESIDENTIAL
MASTERPIECE
BY MASTER ARCHITECT
"HAFEEZ CONTRACTOR".*



Sunworld Arista is your gateway to a beatific life close to everything that your heart wishes. Discover an intensely serviced residential complex where the best in contemporary living blends harmoniously with serenading natural surroundings. Live close to MNC offices, schools, colleges and retreats of leisure and pleasure. Bask in the freedom of an urban sanctuary that houses spacious apartments in a space meant for twice as many. Live refreshed, at Sunworld Arista.



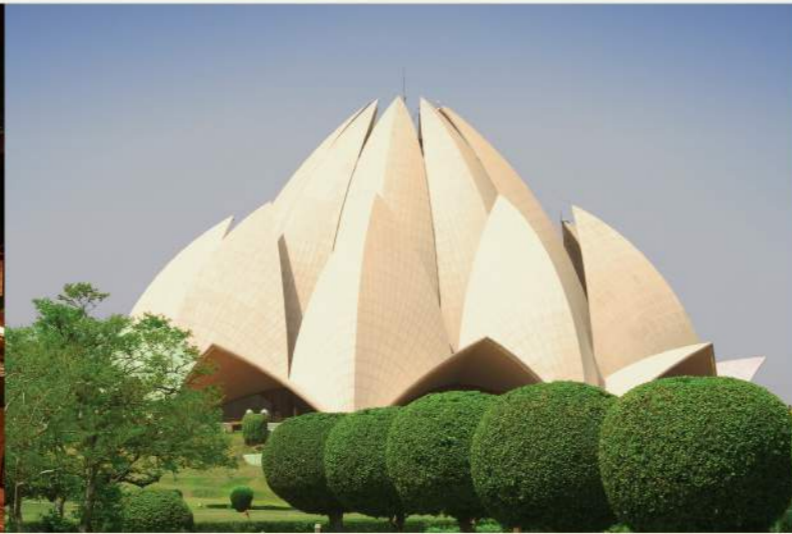
1 minute from FNG



30 minutes from India Gate



20 minutes from South Extension



20 minutes from Nehru Place



15 minutes from Apollo Hospital



Next to MNC Offices

*CLOSE TO THE EXPRESSWAY,
SCHOOLS, COLLEGES, MNC OFFICES.
AND CLOSER STILL TO NATURE.*



Achieve the perfect balance with the fast paced city life on one hand and tranquility of nature on the other. Strategically located on the Noida Expressway in Sector 168. Sunworld Arista offers prime accessibility to civic amenities and crucial facilities. Now find every destination, far and near, welcome you with open arms.

- *Next to MNC Offices • 1 minute from FNG*
- *5 minutes from Sec -18 • 10 minutes from DND Flyover*
- *15 minutes from Apollo Hospital • 20 minutes from South Extension*
- *20 minutes from Nehru Place • 30 minutes from India Gate*



*DISCOVER SOMETHING
NEW EVERYDAY.*



Let your life sail ever so smoothly, in an intensely serviced residential complex that sets new benchmarks in town planning and accessibility management. Secure your peace of mind with state of the art electronic surveillance. Find every whim and fancy delivered to you on a platter. Live refreshed, in the glorious trinity of serenity, luxury and convenience.

AMENITIES

- Ample covered parking space • Beautifully designed landscaped areas
- Flower garden and lily pond • Commercial areas • Tennis court
- Joggers track • Elegantly designed central promenade with an amphitheatre • Separate drop-off areas for each tower
- Squash facilities • Swimming pool & kids' splash pool • Sit-out for senior citizens • Meditation hut • Party lawn • Kids' play area
- Cricket pitch • Ultra modern club • Exclusive club lounge for studio apartments • Exclusive club for super premium apartments
- Rooftop restaurant

SUNWORLD ARISTA

3/4/5 BHK HIGH-END
AIR-CONDITIONED APARTMENTS





*ENDLESS ROOM FOR
PEACE AND BEAUTY -
UNENDING APARTMENTS
IN AN UNENDING SPACE.*

Cherish a life close to the nature, and closer to your every need. Make your inner child revel in the joy of freedom, with a beautiful green expanse open on two sides. Mix work and play with great élan, as you set your sight upon a developed commercial area right next door.

LEGEND

- A Entrance Gate B Entrance Water Body*
- C Entrance Water Fountain*
- D Car Parking E Ramp F Drop-off Areas*
- G Garden Side Lobby*
- H Club House J Swimming Pool*
- K Kids' Swimming Pool L Sit-out for Senior Citizens*
- M Amphitheatre N Cricket Pitch*
- P Lawn Tennis Court Q Flower Garden*
- R Zen Garden S Jogging Track*
- T Badminton Court U Lawn V Kids' Play Area*
- W Commercial Area Y Luxury Service Apartments*
- Z Party Lawn A1 Yoga & Meditation Area*

 TYPE A (4750)	 TYPE B (3500)	 TYPE C (2700)	 TYPE D (2100)	 TYPE E (2100)
 TYPE F (2100)	 TYPE G (1750)	 TYPE H (615)		



STUDIO APARTMENT UNIT PLAN 1 BEDROOM + 1 TOILET

TYPE H

Super Area: 615 sq.ft.

- 1 Bedroom
- 1 Toilet
- 1 Living
- 1 Entrance Lobby
- 1 Kitchenette
- 2 Balconies



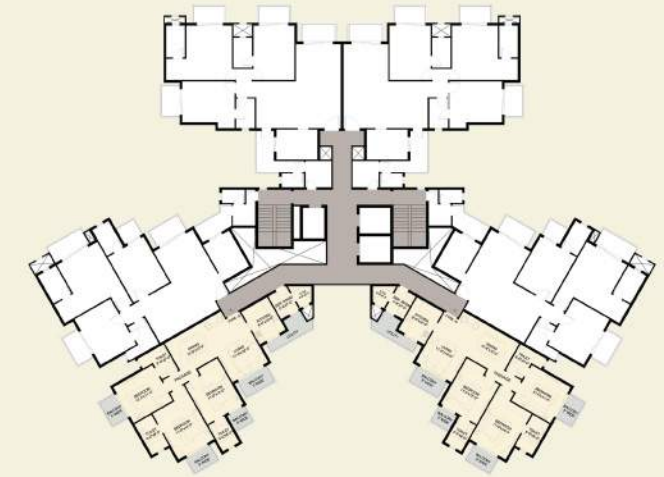
615 Sq. ft.

UNIT PLAN 3 BEDROOM + 3 TOILET

TYPE G

Super Area: 1750 sq.ft.

- 3 Bedroom
- 3 Toilet
- 1 Living + Dining Room
- 1 Servant Room
- 1 Kitchen
- 4 Balconies
- 1 Utility Deck



1750 Sq. ft.

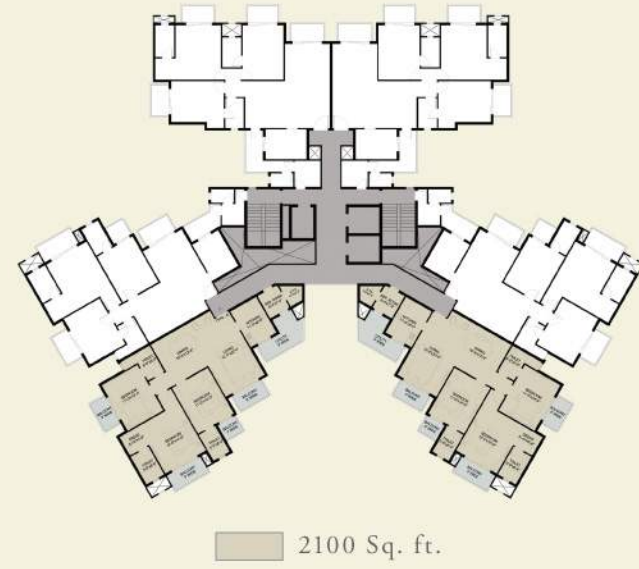


UNIT PLAN 3 BEDROOM + 3 TOILET

TYPE D

Super Area: 2100 Sq.ft.

- 3 Bedroom
- 3 Toilet
- 1 Living
- 1 Dining Room
- 1 Servant Room
- 1 Dressing Room
- 1 Kitchen
- 4 Balconies
- 1 Utility Deck



UNIT PLAN 3 BEDROOM + 3 TOILET

TYPE E

Super Area: 2100 Sq.ft.

- 3 Bedroom
- 3 Toilet
- 1 Living
- 1 Dining Room
- 1 Servant Room
- 1 Dressing Room
- 1 Kitchen
- 4 Balconies
- 1 Utility Deck

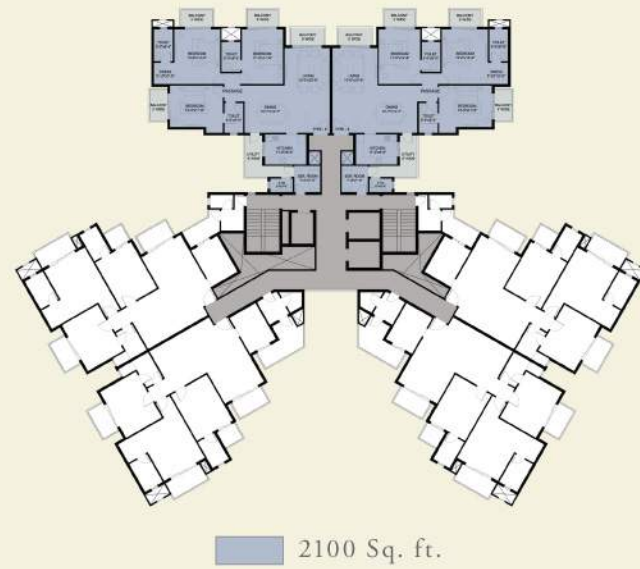


UNIT PLAN 3 BEDROOM + 3 TOILET

TYPE F

Super Area: 2100 Sq.ft.

- 3 Bedroom
- 3 Toilet
- 1 Living
- 1 Dining Room
- 1 Servant Room
- 1 Dressing Room
- 1 Kitchen
- 4 Balconies
- 1 Utility Deck



UNIT PLAN 4 BEDROOM + 4 TOILET

TYPE C

Super Area: 2700 Sq.ft.

- 4 Bedroom
- 4 Toilet
- 1 Living
- 1 Dining Room
- 1 Entrance Lobby
- 1 Servant Room
- 1 Puja Room
- 1 Dressing Room
- 1 Kitchen
- 4 Balconies
- 1 Utility Deck



UNIT PLAN 4 BEDROOM + 4 TOILET

TYPE B

Super Area: 3500 Sq.ft.

- 4 Bedroom
- 4 Toilet
- 1 Living
- 1 Dining Room
- 1 Family Lounge
- 1 Entrance Lobby
- 1 Powder Room
- 1 Servant Room
- 1 Puja Room
- 1 Dressing Room
- 1 Kitchen
- 5 Balconies
- 1 Utility Deck



SUNWORLD
ARISTA
 3/4/5 BHK HIGH-END
 AIR-CONDITIONED APARTMENTS

SUNWORLD'S PROJECT



Nestled among acres of greenery, Vanalika High-End Apartments herald a new concept in luxurious, green living with large residential apartments located in GH-1B, Sector -107(opp Sector-47), Noida.



An eco-friendly project, Sunworld City offers you the ultimate in luxury through a unique way of life; right in the lap of nature. Spread over 104 acres, this gated community offers you every possible amenity for a lifestyle that's truly world class. TS-7, Sector-22 D, Yamuna Expressway, Gautam Budh Nagar, (UP).



Vandita is the ideal gift for your family. Tomorrow when you look back on the days gone by, it should be with a sense of pride and satisfaction. Pride at your Vandita Home - the ultimate abode of happiness and tranquility. It provides you with a fast paced modern apartment lifestyle for those desirous of a rich and satisfying life. This strategically located yet affordable housing complex is developed on 10 acres of land within Sunworld City situated on Yamuna Expressway near the F1 tracks.



Spiretec, a joint venture with Sunworld spread across 21 acres, provides a new edge to the Greater Noida Tech Zone and an optimal environment for business growth and networking opportunities for both leading and emerging IT/ITES companies. Plot no. TZ-13A, Sector Tech Zone, Greater Noida Industrial Development Area, District Gautam Budh Nagar (UP).



SITE OFFICE: GH-1C, Corner Plot, Sector - 168, Noida Expressway, Noida | CALL: 9910557774/5
CORPORATE OFFICE: A4 Ground Floor, Sector - 4, Noida-201301, U.P. | TEL.: 0120 4780100 | www.sunworld.in

PRICE LIST BSP 5250 *

w.e.f. 5 March, 2013

Particulars	Category	Type-I 3 Bedroom + Living + Dining room + 3 Toilets + 1 Servant room + Kitchen + 4 Balconies + Utility deck	Type-II 3 Bedroom + Living + Dining room + 3 Toilets + 1 Servant room + Dressing room + Kitchen + 4 Balconies + Utility deck	Type-III 4 Bedroom + Living + Dining room + Entrance lobby + 4 Toilets + 1 Servant room + Puja room + Dressing room + Kitchen + 4 Balconies + Utility deck	Type-IV 4 Bedroom + Living + Dining Room + Family Lounge + Entrance lobby + 4 Toilets + 1 Powder room + 1 Servant room + Puja room + Dressing room + Kitchen + 5 Balconies + Utility deck
Super Area (in sq. ft.)	Basic Rate per sq. ft.	1750	2100	2700	3500
Construction Linked Plan in INR	5250	9187500	11025000	14175000	18375000
Down Payment Plan in INR (12% Discount)	4620	8085000	9702000	12474000	16170000

*The prices can be revised without any notice at sole discretion of the Company. P.N. (1) The above areas are tentative and subject to change.

(2) All areas are in sq. ft. (3) 1 Sq. mt. = 10.764 sq. ft.

<i>PREFERENCE LOCATION CHARGES</i>	<i>EXTRA CHARGES</i>
Road Facing : ₹ 100/- per sq. ft.	1. Interest Free Maintenance Security : ₹ 25/- per sq. ft.
Park Facing : ₹ 150/- per sq. ft.	2. One Time Lease Rent : ₹ 100/- per sq. ft.
Nose Unit PLC : ₹ 400/- per sq. ft.	3. External Electrification Charges : ₹ 40/- per sq. ft.
3rd Floor : ₹ 175/- per sq. ft.	4. Fire Fighting Charges : ₹ 40/- per sq. ft.
4th Floor : ₹ 150/- per sq. ft.	5. Power Back-up : 20000/- per K.V.A. (proposed back-up 6 K.V.A. per unit)
5th Floor : ₹ 125/- per sq. ft.	6. Club Membership : ₹ 100000/-
6th Floor : ₹ 100/- per sq. ft.	7. Car Parking : ₹ 300000/- (Back to Back ₹ 500000/-) Additional 500000/-
7th Floor : ₹ 75/- per sq. ft.	
8th Floor : ₹ 50/- per sq. ft.	
9th Floor : ₹ 25/- per sq. ft.	
10th Floor : ₹ 25/- per sq. ft.	

*The prices can be revised without any notice at sole discretion of the Company. P.N.

(1) The above areas are tentative and subject to change. (2) All areas are in sq. ft. (3) 1 Sq. mt. = 10.764 sq. ft.

PAYMENT PLAN

DOWN PAYMENT PLAN

Payment Stages	BASIC %	OTHER CHARGES %
At the time of booking	10%	
Within 45 days of booking	85%	100% of one time lease rent, car parking charges and PLC.
At the time of possession	5%	100% of other additional charges viz. EEC, IFMS, FFC, CLUB MEMBERSHIP, POWER BACK-UP.

CONSTRUCTION LINKED PAYMENT PLAN

S.No.	Payment Stages	BASIC %	OTHER CHARGES %
1	At the time of booking	10%	
2	Within 45 days of booking	10%	
3	Within 75 days of booking	10%	50% of one time lease rent
4	On completion of 2nd basement slab	10%	20% of PLC
5	On completion of 2nd floor slab	7.5%	50% of one time lease rent
6	On completion of 6th floor slab	10%	40% of PLC
7	On completion of 10th floor slab	7.5%	100% car parking
8	On completion of 14th floor slab	10%	40% of PLC
9	On completion of 16th floor slab	7.5%	
10	On completion of top floor slab	7.5%	
11	On completion of brick work	5%	
12	At the time of possession	5%	100% of other additional charges viz. EEC, IFMS, FFC, CLUB MEMBERSHIP, POWER BACK-UP.

S.No.	Unit Type	Approx Area (in Sq. ft.)
1	4 Bedroom + Living + Dining room + Family lounge + Entrance lobby + 4 Toilets + 1 Powder room + 1 Servant room + Puja room + Dressing room + Kitchen + 5 Balconies + Utility deck	3500
2	4 Bedroom + Living + Dining room + Entrance lobby + 4 Toilets + 1 Servant room + Puja room + Dressing room + Kitchen + 4 Balconies + Utility deck	2700
3	3 Bedroom + Living + Dining room + 3 Toilets + 1 Servant room + Dressing + Kitchen + 4 Balconies + Utility deck	2100
4	3 Bedroom + Living + Dining room + 3 Toilets + 1 Servant room + Kitchen + 4 Balconies + Utility deck	1750

PRICE LIST OF STUDIO APARTMENTS

Fully Furnished Luxury Studio Apartments (1 BHK)		
(615 sq.ft.) 1 Bedroom + Living + Entrance lobby + 1 Toilet + Kitchenette + 2 Balconies		
Particulars	Super Area (in Sq. ft.)	Price
Construction linked plan in INR	615	3500000
Down Payment Plan (Discount 12%)	615	3080000
Prefrential Location Charges		
14th to 20th floor	₹ 150/- per sq. ft.	
21st and above floors	₹ 100/- per sq. ft.	
Additional Charges (One Time Payment)		
IFMS (Interest Free Maintenance Security)	₹ 25/- per sq. ft.	
Lease Rent	₹ 100/- per sq. ft.	
EEC & FFC	₹ 80/- per sq. ft.	
Car Parking	₹ 300000	
Club Membership	Free	
Power Back-up	1 K.V.A. free (Max 3 K.V.A. @ ₹ 20000/K.V.A.)	

SPECIFICATIONS

- Air conditioner • LCD • Two-seater dining table • Double bed with mattresses and pillow • Complete woodwork of the cupboards
- Bookshelf cum showcase • Designer light fitting • Curtain with rods • Towel rack in bathroom • Rocking chair
- Refrigerator • Food processor • RO in kitchen • Electric chimney • Electric oven • Crockery • Electric kettle
- Juicer mixer • Toaster • Gas burner • EPABX system • Study table with chair • Equipped kitchen

SPECIFICATIONS

<p><i>AIR CONDITIONED APARTMENTS</i> Structure</p>	<p>R.C.C Framed Structure</p>
<p><i>LIVING ROOM, DINING ROOM AND LOUNGE</i> Floors Doors, External Doors and Windows Walls Internal Doors</p>	<p>Vitrified Tiles Modular Doors/High quality UPVC Internal: OBD External: Good quality external grade paint Modular doors</p>
<p><i>BEDROOM & DRESS</i> Floors Doors, External Doors and Windows Walls Internal Doors</p>	<p>Vitrified Tiles / Laminated Wooden floor Modular Doors/High quality UPVC Internal: OBD External: Good quality external grade paint Modular doors</p>
<p><i>TOILETS</i> Floors Doors, External Doors and Windows Fixtures and Fittings Walls Internal Doors</p>	<p>Anti Skid Ceramic Tiles / Vitrified tiles Modular Doors/High quality UPVC All provided with Standard company, CP fittings make - Jaguar / Marc and equivalent Tiles in cladding up to 8' Balance walls painted in OBD Modular doors</p>
<p><i>MODULAR KITCHEN</i> Floors Doors, External Doors and Windows Fixture and Fittings Walls</p>	<p>Anti Skid Ceramic Tiles / Vitrified tiles Modular Doors/High quality UPVC Wood Work with Granite Top & Sink Ceramic tiles 2'-6" above counter, balance walls painted in OBD</p>
<p><i>BALCONIES / VERANDAH</i> Floors Railings Walls</p>	<p>Anti Skid Ceramic Tiles / Vitrified tiles MS Railing as per Design OBD</p>
<p><i>LIFT LOBBIES / CORRIDORS</i> Floors Walls External Wall finishes to be finalized with respect to Elevation</p>	<p>Granite / Marble Stone Cladding / Acrylic Emulsion</p>
<p><i>ELECTRICAL FITTINGS</i></p>	<p>Modular switches & Panel board from standard company like Havells and equivalent</p>