



Life in a metro made easy.



An invitation to the Perfect Metro Life

Countless opportunities, throbbing business hubs, better facilities, fast paced development there is so much that attracts millions of people towards a metro.

However, the metro lifestyle has an ugly side too – congested areas, rising pollution, water shortages, power-cuts, shrinking greens, impatient people and the list seems to be endless. Life in a metro keeps throwing new challenges everyday, adding to the complexities of life.

But if in the midst of this maddening chaos, you have a place that soothes your soul and rejuvenates your mind, you can surely live the million moods of a metro lifestyle to the fullest.

And this is exactly what you get to do at Eldeco Amantran.



Amenities to beat the stress of the metro life

- Lavish sports facilities - Tennis, badminton, cricket pitch, table tennis and much more
- Club with swimming pool, cards room, gym, party hall and guest rooms
- 100% power backup
- Drinking water through individual R.O.
- Solar panels on roof tops
- 24 x 7 CCTV security
- Computerised electricity billing
- Systematic garbage collection system
- Golf Carts to ferry guests



Master plan for a true metro lifestyle

- Elegantly appointed 2/3/4 bedroom apartments and penthouses
- Most units are green facing
- Attached private gardens and basements for ground floor units, private terraces at multiple levels
- Segregated pedestrians and vehicular traffic
- Open and basement parking
- Project site surrounded by wide green belts and vast public greens
- Lavish entrance lounge for every tower
- Designated vendor spaces
- Retail Spaces (Phase II)
- Designated sports area





Master Plan

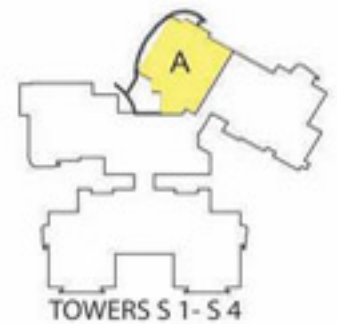
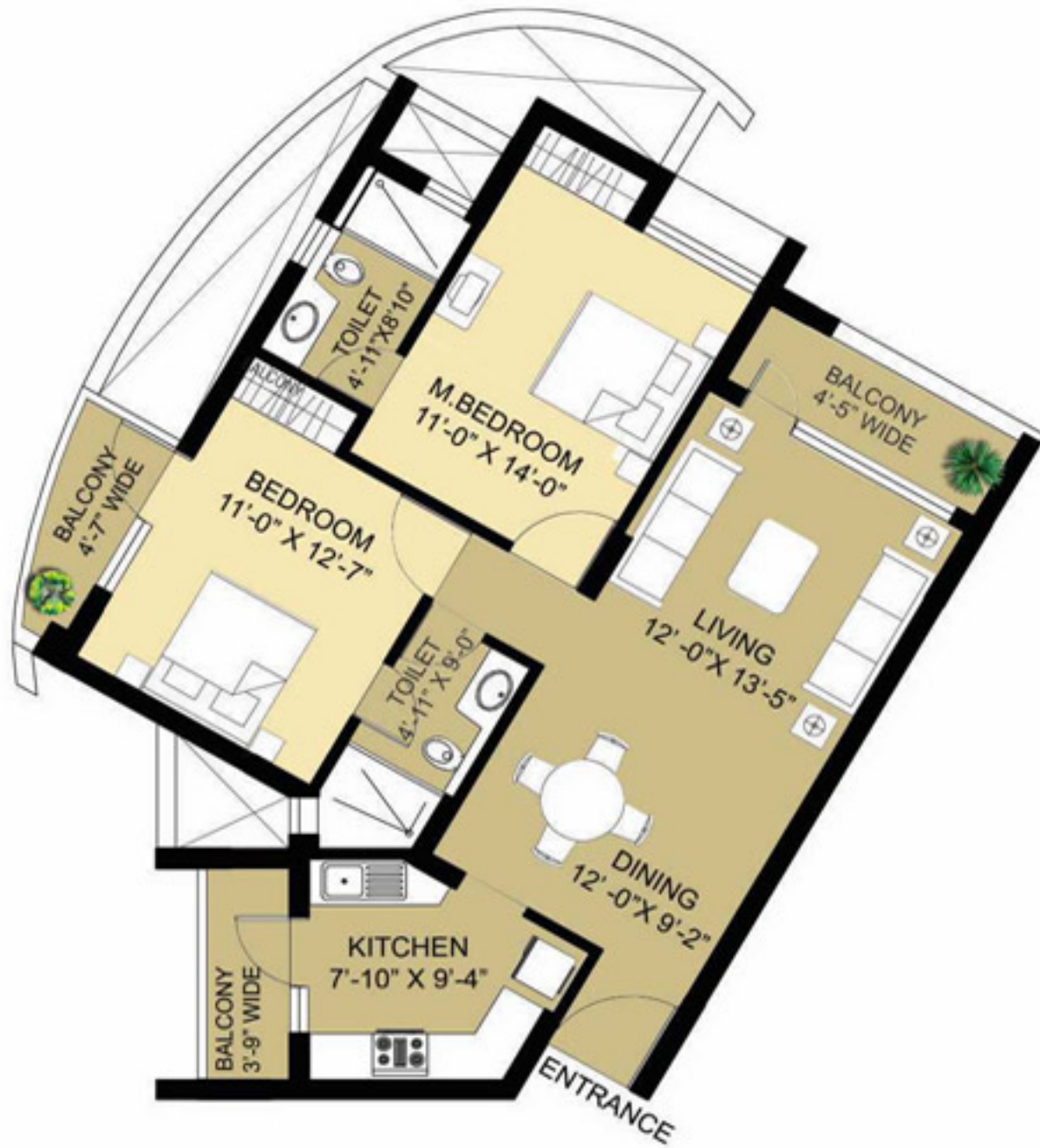


Legends:-

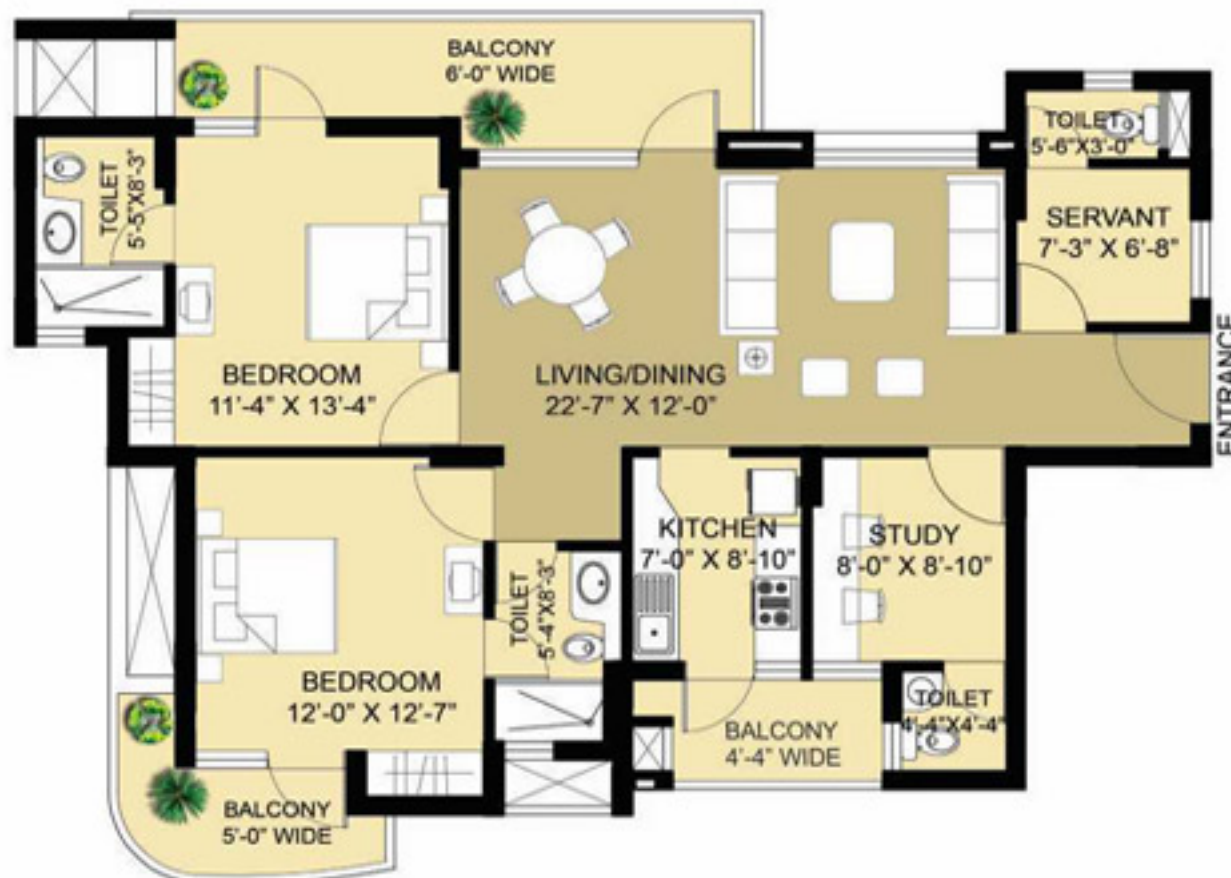
- 1 MAIN GATE
- 2 KIDS BUS WAITING AREA
- 3 PAVILION
- 4 DRINKING WATER STATION
- 5 SAND PIT FOR TODDLERS
- 6 KIDS SWINGS
- 7 KIDS ACTIVITY LAWN
- 8a DAKSHIN GREENS
- 8b UTTAR GREENS
- 9 BADMINTON COURT
- 10 HALF BASKETBALL COURT
- 11 GATE NO.2
- 12 COMMERCIAL ENTRY/EXIT
- 13 OPEN AIR THEATRE
- 14 PLAY AREA FOR KIDS
- 15 SPACE FOR TEMP KITCHEN
- 16 CLUB-1
- 17 SWIMMING POOL-1
- 18 KIDS POOL-1
- 19 PARTY LAWNS
- 20 FIRE TENDER PATH
- 21 CLUB-2
- 22 SWIMMING POOL-2
- 23 KIDS POOL-2
- 24 FUTURE DEVELOPMENT (MULTI STOREY TOWER)
- 25 GREEN LAWN
- 26 COMMERCIAL PLAZA
- 27 TENNIS COURT
- 28 PUBLIC TOILET
- 29 KIOSKS
- 30 STP/ESS AREA
- 31 KIDS PLAY
- 32 RESERVED PARKING
- 32a VISITOR'S PARKING
- 33 SERVICE YARD
- 34 VENTILATION CUTOUT/FIRE ESCAPE
- PRIVATE GREENS

Disclaimer:-

The areas and plans shown here are indicative and subject to change. The project and facilities will be developed in phase wise manner. Please go through the detailed terms of allotment before making a booking. The terms of Allotment Agreement shall have precedence over this Plan.



Type B (2B+3T+ Study + Servant room + Powder room)
 Super Area: 1610 Sq. ft.
 For tower S5-S6: 1655 Sq. ft.

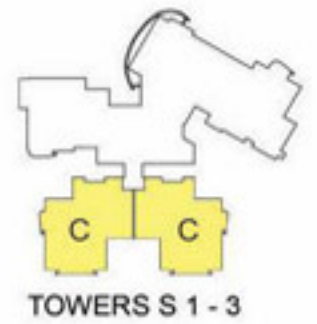


Disclaimer:

- The areas and plans shown here are subject to change
- 1 Sq. ft. = 0.093 sq. mt. 10.764 sq. ft. = 1 sq. mt. = 1.196 sq. yd. and 3.28 ft. = 1 mt
- All dimensions shown in feet inches are close approximation to metric dimensions
- The above plan are indicative. Please check actual plans with marketing.



Type C (3B + 3T)
 Super Area: 1805 Sq. ft.



Type D (3B + 4T
 + Servant room)
 Super Area: 2055 Sq. ft.
 For tower S5-S6: 2095 Sq. ft.



Disclaimer:

- The areas and plans shown here are subject to change
- 1 Sq. ft. = 0.093 sq. mt. 10.764 sq. ft. = 1 sq.mt. = 1.196 sq. yd. and 3.28 ft. = 1 mt
- All dimensions shown in feet inches are close approximation to metric dimensions
- The above plan are indicative. Please check actual plans with marketing.



Type E (2B + 2T + Study)
 Super Area: 1330 Sq. ft.



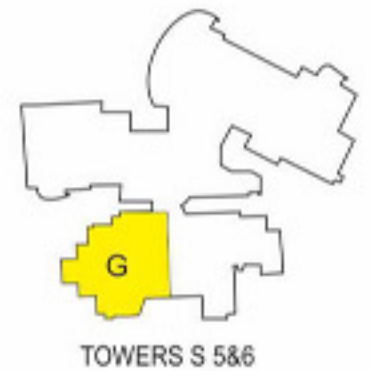
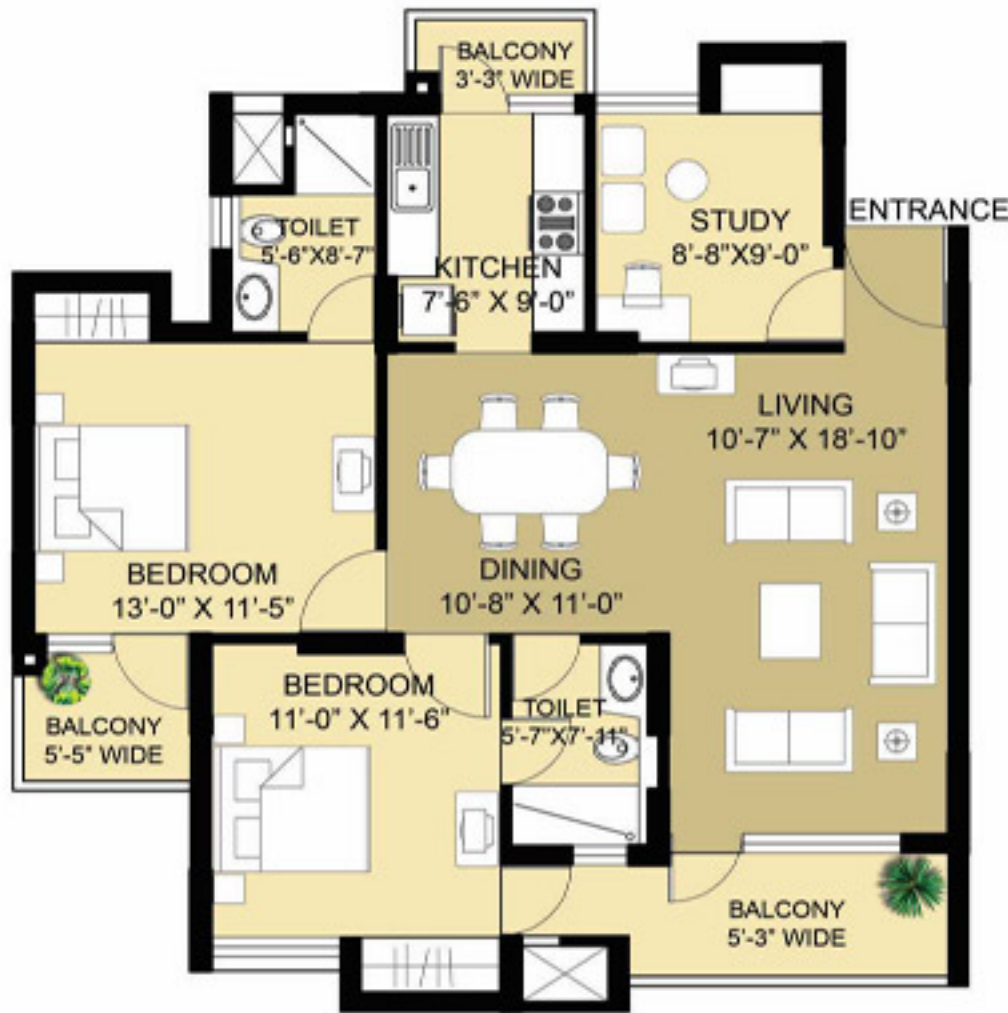
Type F (2B + 2T)
 Super Area: 1095 Sq. ft.



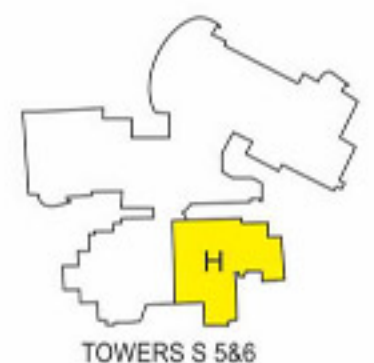
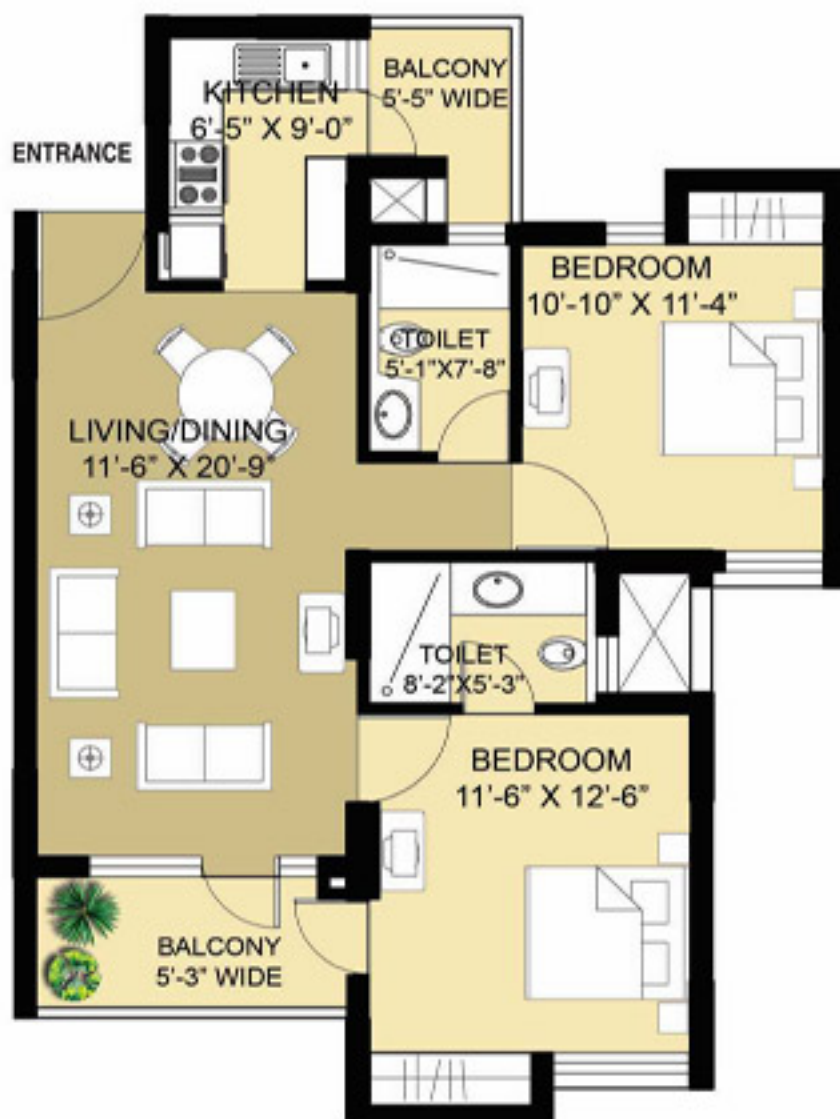
Disclaimer:

- The areas and plans shown here are subject to change
- 1 Sq. ft. = 0.093 sq. mt. 10.764 sq. ft. = 1 sq.mt. = 1.196 sq. yd. and 3.28 ft. = 1 mt
- All dimensions shown in feet inches are close approximation to metric dimensions
- The above plan are indicative. Please check actual plans with marketing.

Type G (2B + 2T + Study)
 Super Area: 1410 Sq. ft.



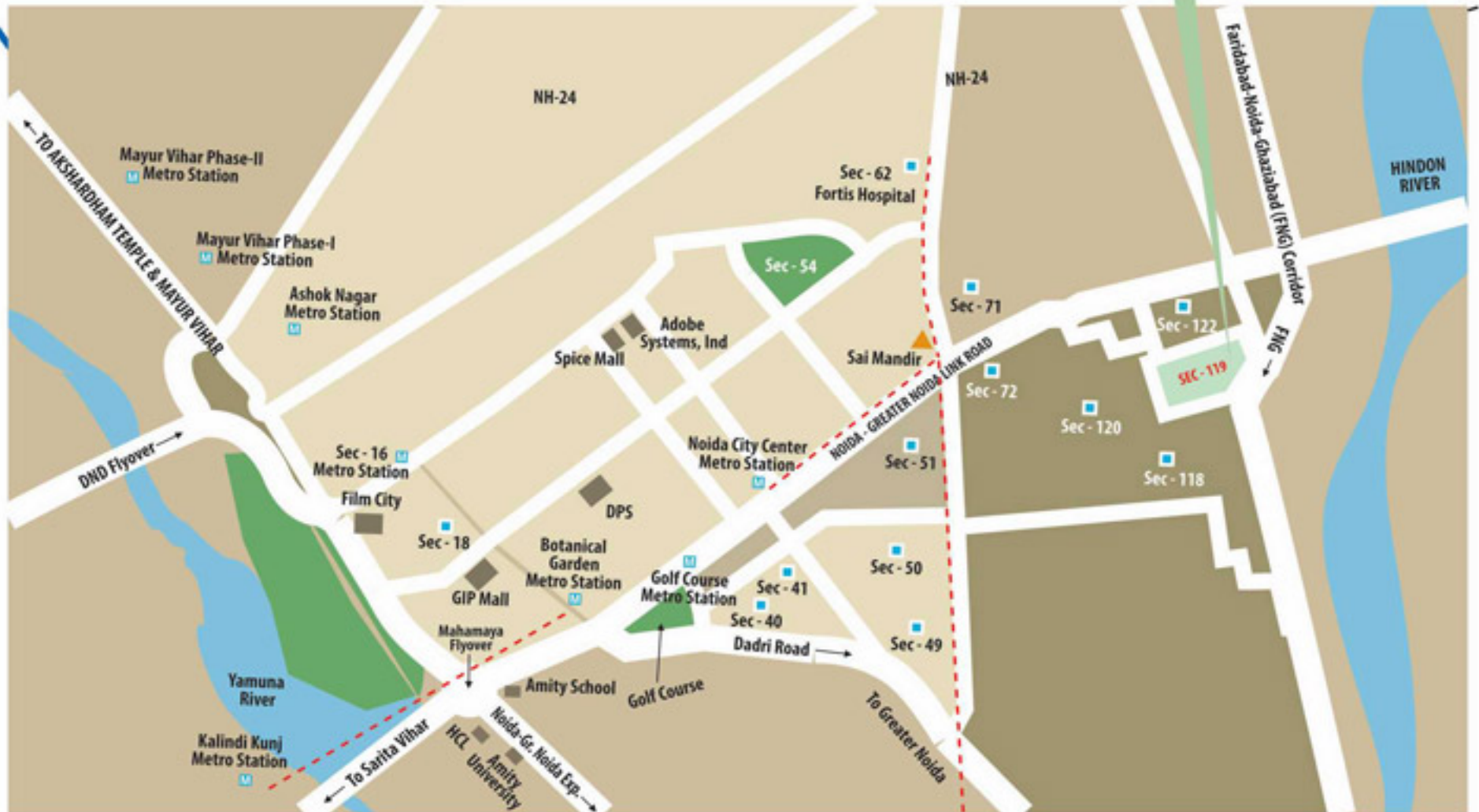
Type H (2B + 2T)
 Super Area: 1140 Sq. ft.



Disclaimer:

- The areas and plans shown here are subject to change
- 1 Sq. ft. = 0.093 sq. mt. 10,764 sq. ft. = 1 sq. mt. = 1,196 sq. yd. and 3,28 ft. = 1 mt
- All dimensions shown in feet inches are close approximation to metric dimensions
- The above plan are indicative. Please check actual plans with marketing.

LOCATION MAP



Distance (approx.) :-

Golf Course	7.5 km
Sec-18, Atta Mkt.	10.0 km
Noida City Centre Metro Station	6.0 km
Fortis Hospital, Sec-62	7.0 km
DND Flyover	11.5 km
Nizamuddin Station	18.5 km
Kalindikunj	12.0 km

Legends:-

- - - Proposed Metro Lines
- Existing Metro Line
- M Existing Metro Stations
- Sectors
- Major Roads

Note: Map Not to Scale

AT ELDECO AAMANTRAN, CONVENIENCE AND ACCESSIBILITY ARE A PERFECT MATCH.

- ❖ Located in close proximity to the 130-metre wide Greater Noida road and the upcoming FNG (Faridabad-Noida-Ghaziabad) corridor. It will offer the best connectivity to NH 24, Greater Noida and Faridabad. It also has easy access to the upcoming Noida City Centre.
- ❖ Besides excellent connectivity by road, the project's proximity to the Metro link is an added advantage, reducing travel time between Delhi, Noida and Greater Noida.
- ❖ Parks and lush green surroundings a highlight of the project.
- ❖ Golf course within driving distance of 10-15 minutes.
- ❖ The commercial hub of Noida, Sector 18, is just a short drive away.
- ❖ Fortis Hospital at Sector 62, one of NCR's premium hospitals, is just five minutes away.
- ❖ Project has excellent potential for rental returns, as a number of software giants such as HCL and TCS have corporate offices closeby.



Corp. & Communication Add: 201-212, 2nd Floor, Splendor Forum, Jasola District Centre, New Delhi-110025, **Tel.:** 40655000/100, **Fax:** 40655111.

Site Off. Eldeco Amantran, Sec 119, Noida- 201304

Tel.: (0120) 3144844, **Mobile:** 9818682010, 9810388620

E-mail: contact@eldecoproperties.com **Website:** www.eldecogroup.com